



**CAMBRIDGE
INTERNATIONAL
ADVISORY GROUP**

AUTOMOTIVE ASSEMBLY OPERATIONS

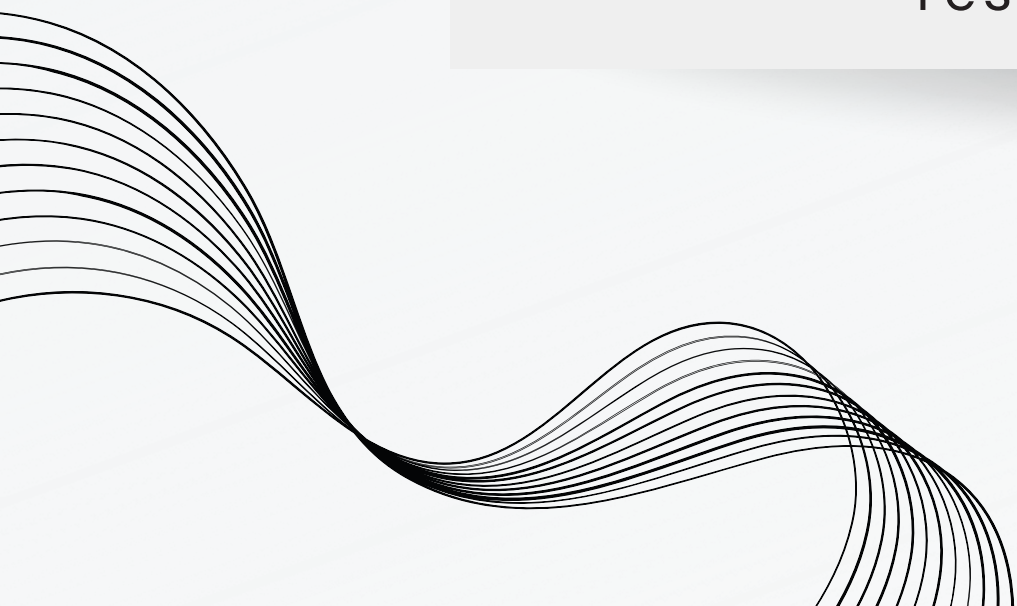
OVERVIEW



- A brief synopsis of the operational ongoing car manufacturers such as GM, Stellantis, Ford, and other market leaders.



- A look into the organizational structure of automotive plants.
- Overhead view of delegation responsibilities within multiple plants.





01

MATERIAL SOURCING

A car manufacturer outsources specific raw materials, car parts, and other products necessary for the production of a vehicle. Obtaining these resources can be a long and strenuous process.

02

ASSEMBLY

After the resources have been accumulated, they are then assembled in a production line. Where each part of the automobile is added to the chassis.

03

QUALITY CONTROL

After the automobile has been assembled it undergoes a process of review to ensure that the vehicle is safe for consumers.

04

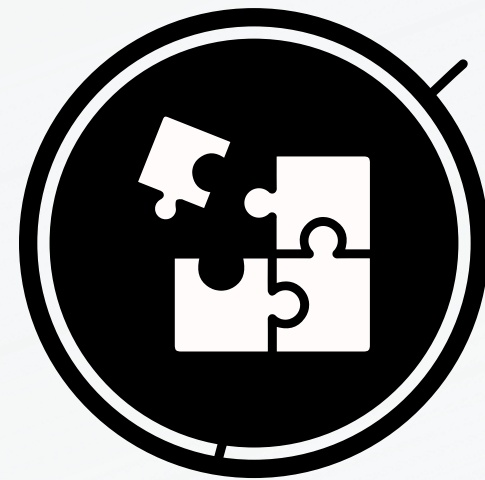
LOGISITICS

After the automobile has been assembled and has passed quality control, it is then time to ship and move the automobiles to dealerships and other vendors.

DIFFERENCES IN ASSEMBLY

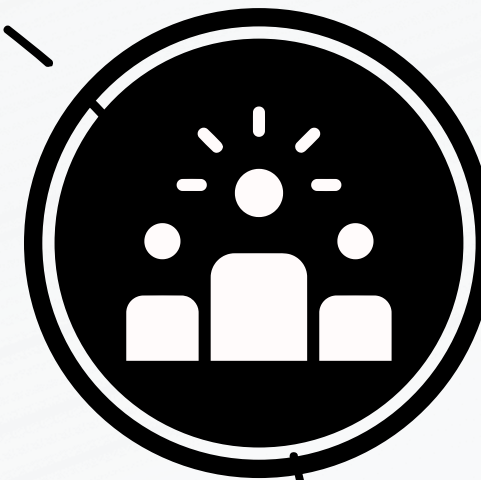
Assembly Automation

Automated assembly is completed by a fleet of robots who much like a manual assembly are assigned to a specific task of automobile assembly. Often times there are human workers that supervise but do not assemble.

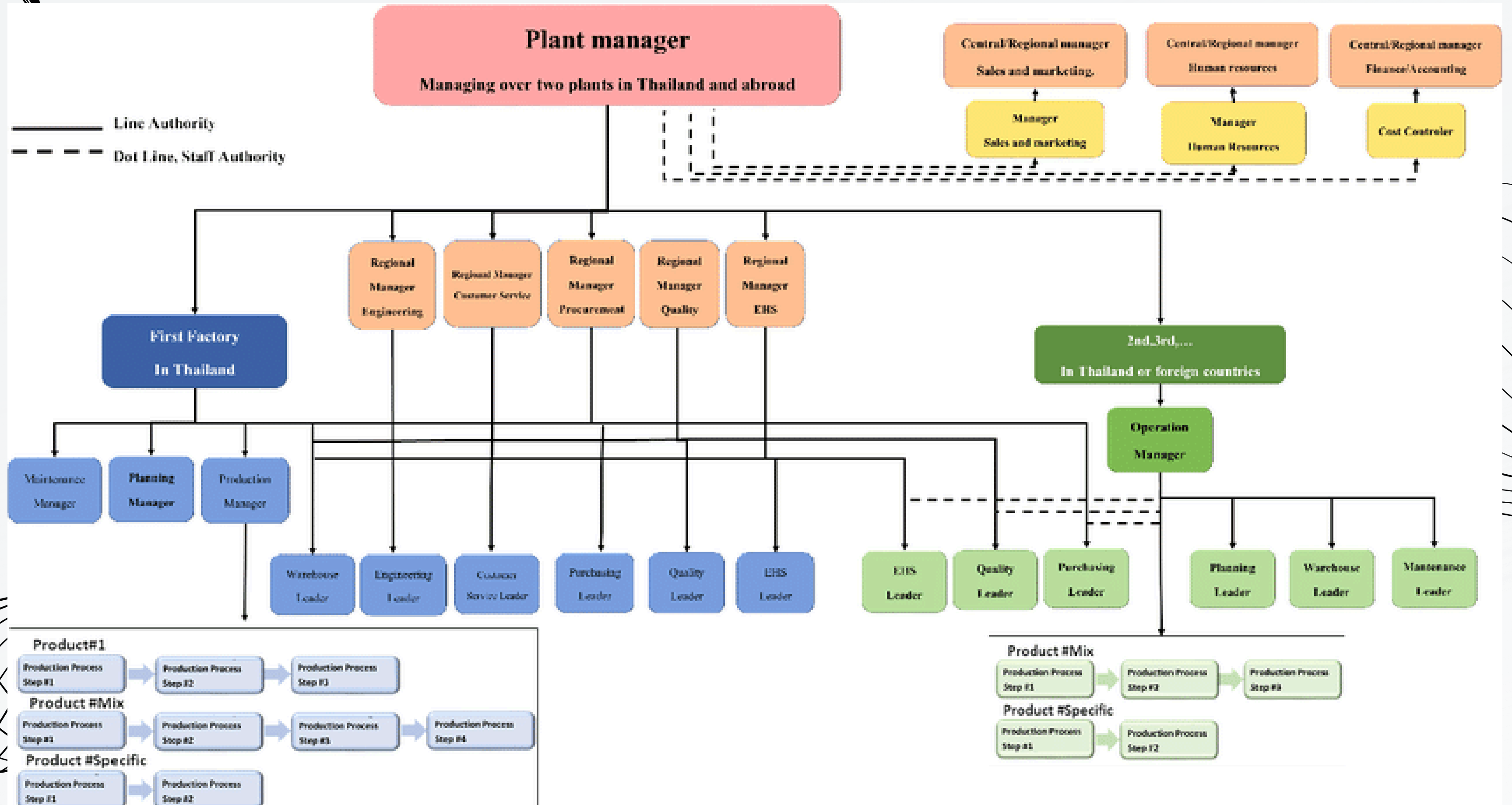


Manual Assembly

In a manual assembly line, workers are assigned to certain manufacturing steps. Responsible for assembling specific parts of an automobile.



ORGANIZATIONAL STRUCTURE



REFERENCES

Layton, J. (2021). How automotive production lines work. HowStuffWorks.

<https://auto.howstuffworks.com/under-the-hood/auto-manufacturing/automotive-production-line.htm>

M. Karanja, J. Nzuki, & S. Wanjau. (2021). Effective and efficient organization structure model for the management of multiple construction projects. ResearchGate.

https://www.researchgate.net/figure/Effective-and-efficient-organization-structure-model-for-management-of-multiple_fig2_352363030